



2019 Bond Monthly Update

June 8, 2020

Dubose



- Ⓜ Select fill building complete
- Ⓜ Survey control points verified
- Ⓜ Underslab electrical conduits in progress
- Ⓜ Underslab plumbing lines started

Noonan

- Ⓜ Site clearing/demo complete
- Ⓜ Foundation excavation completed
- Ⓜ Subgrade tested and passed
- Ⓜ Select fill at building pad in progress
- Ⓜ Conduits/raceway from existing building started



Saenz



- ® Site demolition near complete
- ® Excavation near complete
- ® Survey crew verifying controls

Schallert



- ® Site clearing/demo complete
- ® Lime stabilization for parking completed
- ® Foundation excavation completed
- ® Underground utility work completed and backfilled
- ® Conduits/raceway from existing building started
- ® Select fill at bulding pad started; compaction and testing ongoing
- ® De-watering activities as needed

William Adams



- Ⓜ Site clearing/demo complete
- Ⓜ Foundation excavation started
- Ⓜ Electrical conduits/raceway extended from existing building
- Ⓜ Storm drain piping and inlets in progress
- Ⓜ Layout for west side parking; Revised to resolve power pole conflict
- Ⓜ De-watering activities as needed; temporary protection for existing doors

High School Parking Lot Improvements



- Ⓜ Contract awarded and executed with Diamond X Construction
- Ⓜ Pre-construction meeting set for next week
- Ⓜ Project schedule is 60 days

High School Roofing Project



- Ⓜ Bids received May 6
- Ⓜ Summary report from lab illustrates evidence of hail damage
- Ⓜ Engaged with insurance adjuster to reopen claim



2019 Bond Program Financial Summary

June 8, 2020



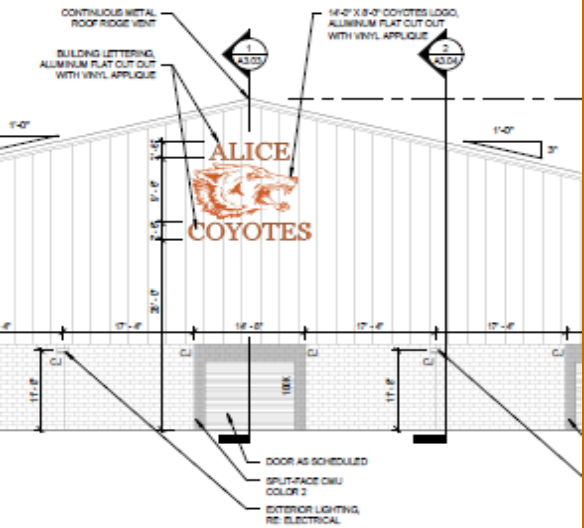
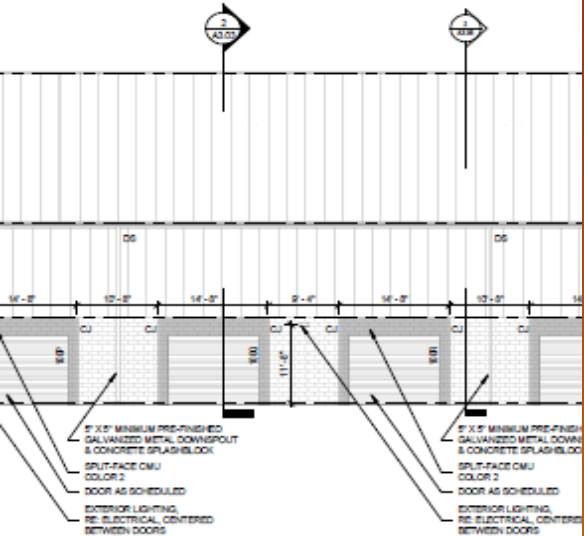
Project	Bond Budget	Committed Costs	Change Orders	Total Committed	Budget Balance	Expenditures to Date	Expenditure Balance
Dubose Campus Addition	\$ 2,337,082	\$ 2,173,009	\$ -	\$ 2,173,009	\$ 164,073	\$ 240,330	\$ 1,932,679
WAMS Campus Addition	\$ 5,842,705	\$ 4,692,287	\$ -	\$ 4,692,287	\$ 1,150,419	\$ 521,753	\$ 4,170,534
Noonan Campus Addition	\$ 2,921,353	\$ 2,742,560	\$ -	\$ 2,742,560	\$ 178,793	\$ 292,660	\$ 2,449,899
Saenz Campus Addition	\$ 2,921,353	\$ 2,842,828	\$ -	\$ 2,842,828	\$ 78,525	\$ 267,097	\$ 2,575,731
Schallert Campus Addition	\$ 2,921,353	\$ 2,929,332	\$ -	\$ 2,929,332	\$ (7,979)	\$ 305,045	\$ 2,624,287
High School Roofing & Parking Lots	\$ 3,037,944	\$ 841,815	\$ -	\$ 841,815	\$ 2,196,129	\$ 169,965	\$ 671,849
Miscellaneous	\$ 808,211	\$ 371,754	\$ -	\$ 371,754	\$ 436,457	\$ 134,750	\$ 237,004
TOTALS	\$ 20,790,000	\$ 16,593,583	\$ -	\$ 16,593,583	\$ 4,196,416	\$ 1,931,599	\$ 14,661,984



2019

Non-Bond Update

June 8, 2020

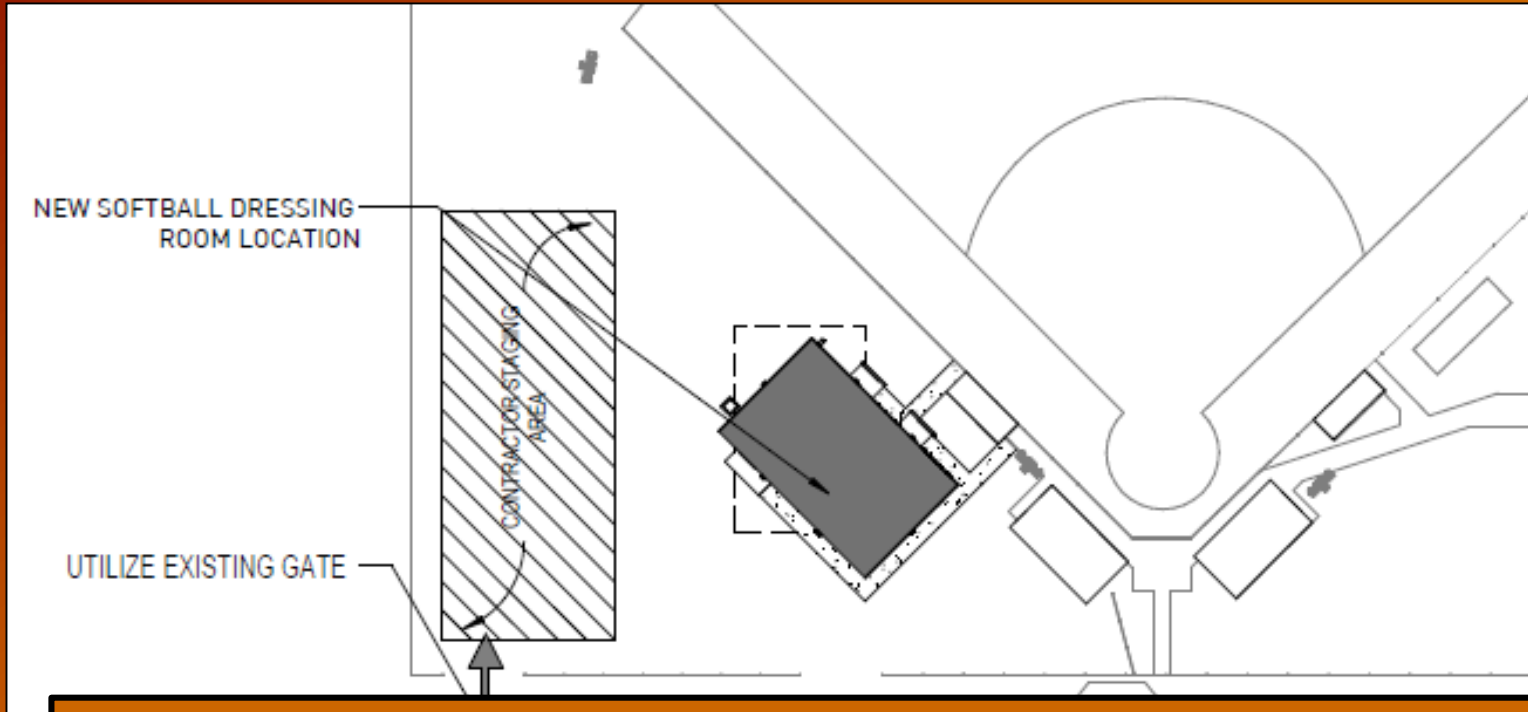


Multi-Purpose Facility



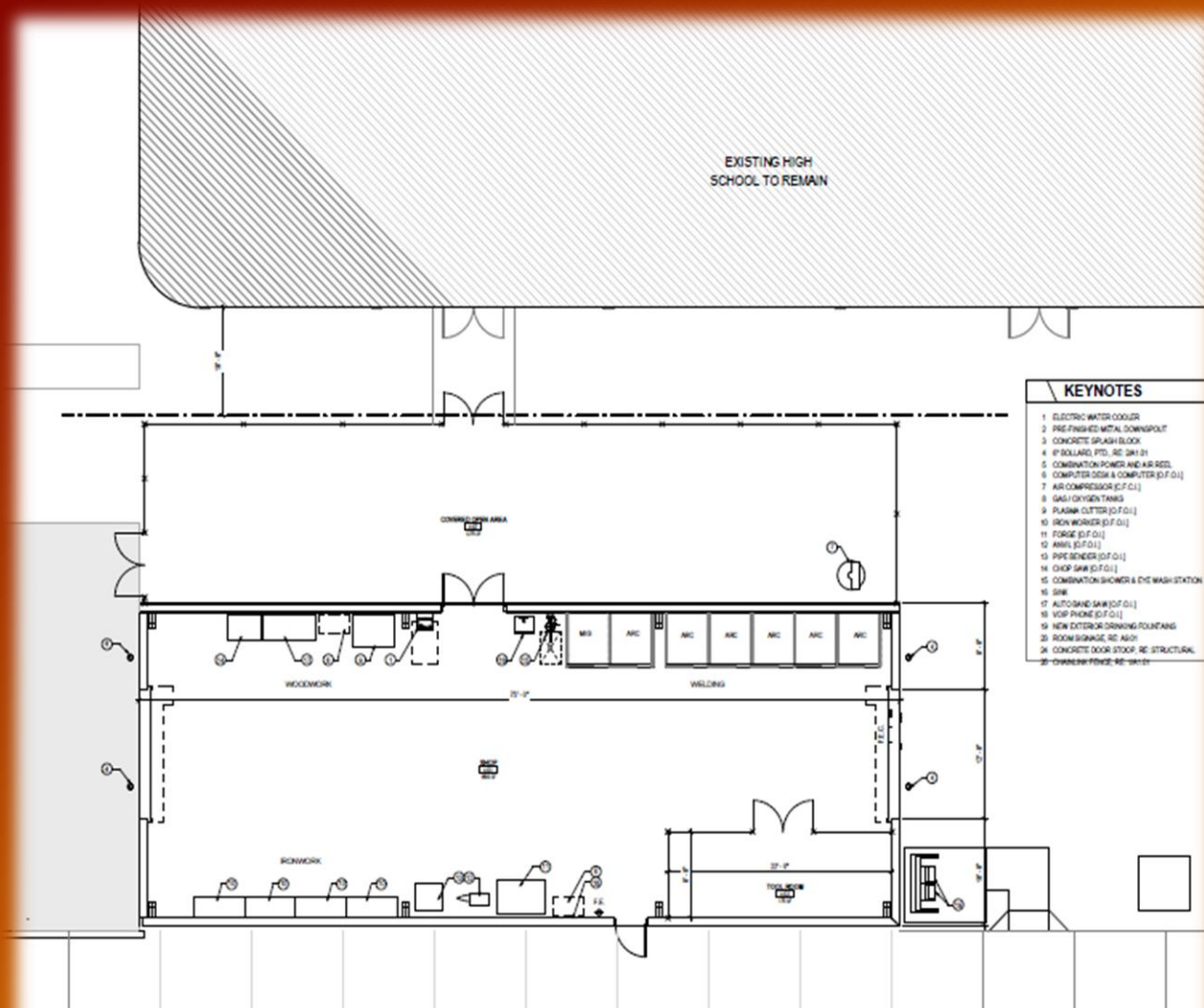
- Ⓜ Contractor has mobilized
- Ⓜ Temporary fencing and erosion control measures in place
- Ⓜ Foundation excavation is completed
- Ⓜ De-watering activities as required

Girls Softball Facility



- Ⓜ TF Harper approved for Job Order Contract
- Ⓜ Contract documents in progress
- Ⓜ Permitting in progress
- Ⓜ Architectural supplement in progress to modify site details

Ag Mechanic Building



- ® Bids received and continue review for cost savings
- ® Architectural modifications for open concept and outdoor area
- ® Working with City on variance for canopy



Questions?

June 8, 2020